

# ARP Curriculum Newsletter

## Spring B 2026



Welcome back, we hope you've had a lovely holiday.

This half term our topic will be **"The Farm and Pets"**. In literacy, we will be reading fiction and non-fiction texts with the children. We will focus on PSHE and recognising emotions in ourselves and others. We will continue to cook each week with our buddies. We will also visit the reading hub this half term and invite parents in to join us.

An overview of planning for this half term is available on the school website under the 'What We Do' section. This sets out all the subjects and learning that children will be doing every week.

<https://www.becontreeprimaryschool.com/>

### ARP Expectations and Arrangements

**PE days:** Children may be supported to join their class for PE. Please refer to their year group newsletter so you know which days to send your child in their PE kit.

**Punctuality:** Please ensure you drop and collect your children on time. Our ARP doors open at 8:45am and close at 8:50am, after this time your child will need to go to the late door. Collection time is 3:15pm. At 3:25pm the door will shut and children will have to be collected from the school office.

**Sensory Circuits:** Children will be taking part in sensory circuits on a daily basis. We ask that they come in their usual school uniform for this.

**Snacks:** Children are provided a fruit snack for playtimes. Milk can also be purchased for your child by completing the form we can provide. If your child requires a different snack then please provide this yourself and inform the ARP staff.

**Water:** Please ensure your child has a labelled water bottle in school each day.

**Spare clothes:** Our learning in the ARP includes lots of messy and water-based play. We do provide aprons but would appreciate if you could provide a spare set of clothes in your child's bag.

**Nappies:** For those children who are in either nappies or pull ups, please ensure there are wipes as well as the nappies in your child's bag each day.

**Colder weather:** Please ensure your child is suitably dressed for the colder weather. If you would like them to wear a hat, gloves etc please ensure it is clearly labelled.

### Home Learning Information

Our Home Learning Strategy can be found on the school website.

<https://www.becontreeprimaryschool.com/home-learning-strategy/>

[This sets out a range of essential tasks, which are completed at home supported by a parent/carers or family member.](#)

Key home learning all ARP children are expected to do, includes:

- **Regular communication/conversations** with your child to promote their oracy and communication skills. This can include the use of pictures or Makaton signs.
- **Daily Reading with and/or to your child** each day. It is essential that you are sharing books with your child. They may be picture books or text-based books depending upon what your child enjoys and will engage with. Some of our children are confident readers. If this is the case for you, please encourage your child to read to you as well as listening to you read.
- **Turn-taking games** with parents and/or siblings.

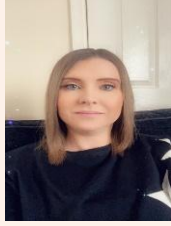
**Encourage independence and self-help skills**, including toileting, dressing and undressing.

**ARP Team**



**Mrs Cracknell (ARP Lead)**

**Mrs Bousbaa (ARP Teacher)**



**Mrs Farquhar  
Special Learning Support  
Assistant**

**Miss Allen  
Learning Support  
Assistant**

**Miss Tuitt  
Learning Support  
Assistant**

**Ms Goj  
Learning Support  
Assistant**

## Key Events and Dates this Half term

February				
Monday	Tuesday	Wednesday	Thursday	Friday
23	24	25	26	27
				
March				
Monday	Tuesday	Wednesday	Thursday	Friday
2	3	4	5	6
			 Non-uniform: dress up as your favourite book character	
9	10	11	12	13
				 Non-uniform: wear something red/donations collected
16	17	18	19	20
23	24	25	26	27
<b>Movie Night</b>  Times Tables and Spelling Challenge week		<b>25 Eid Community Event</b> 		