

# ARP Curriculum Newsletter

## Summer A 2026



Welcome back, we hope you've had a lovely time.

This half term our topic will be "**Our Community**". In literacy, we will be reading fiction and non-fiction texts with the children. We will focus on PSHE and recognising things that make us feel uncertain or curious. We will continue to cook each week with our buddies. We will also arrange visits within our community.

An overview of planning for this half term is available on the school website under the 'What We Do' section. This sets out all the subjects and learning that children will be doing every week.

<https://www.becontreeprimaryschool.com/>

### ARP Expectations and Arrangements

**PE days:** Children may be supported to join their class for PE. Please refer to their year group newsletter so you know which days to send your child in their PE kit.

**Punctuality:** Please ensure you drop and collect your children on time. Our ARP doors open at 8:45am and close at 8:50am, after this time your child will need to go to the late door. Collection time is 3:15pm. At 3:25pm the door will shut and children will have to be collected from the school office.

**Hall Time:** Children will be enjoy spending time in the hall, daily. They can listen to music, dance or just be themselves.

**Snacks:** Children are provided a fruit snack for playtimes. Milk can also be purchased for your child by completing the form we can provide. If your child requires a different snack then please provide this yourself and inform the ARP staff.

**Water:** Please ensure your child has a labelled water bottle in school each day.

**Spare clothes:** Our learning in the ARP includes lots of messy and water-based play. We do provide aprons but would appreciate if you could provide a spare set of clothes in your child's bag.

**Nappies:** For those children who are in either nappies or pull ups, please ensure there are wipes as well as the nappies in your child's bag each day.

**Warmer weather:** The sun is shining and the days are getting warmer. Please ensure your child is suitably dressed for the warmer weather. If you would like them to wear a sun hat, please ensure it is clearly labelled. Also, if they need to wear sun cream, please let us know and provide a bottle for in school.

### Home Learning Information

Our Home Learning Strategy can be found on the school website.

<https://www.becontreeprimaryschool.com/home-learning-strategy/>

[This sets out a range of essential tasks, which are completed at home supported by a parent/carer or family member.](#)

Key home learning all ARP children are expected to do, includes:

- **Regular communication/conversations** with your child to promote their oracy and communication skills. This can include the use of pictures or Makaton signs.
- **Daily Reading with and/or to your child** each day. It is essential that you are sharing books with your child. They may be picture books or text-based books depending upon what your child enjoys and will engage with. Some of our children are confident readers. If this is the case for you, please encourage your child to read to you as well as listening to you read.
- **Turn-taking games** with parents and/or siblings.

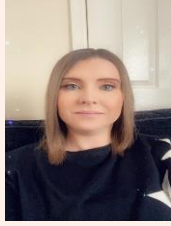
**Encourage independence and self-help skills**, including toileting, dressing and undressing.

**ARP Team**



**Mrs Cracknell (ARP Lead)**

**Mrs Bousbaa (ARP Teacher)**



**Mrs Farquhar  
Special Learning Support  
Assistant**

**Miss Allen  
Learning Support  
Assistant**

**Miss Tuitt  
Learning Support  
Assistant**

**Ms Goj  
Learning Support  
Assistant**

## Key Events and Dates this Half term

April				
Monday	Tuesday	Wednesday	Thursday	Friday
13 Return Autism Awareness Projects 	14	15	16	17
20	21	22	23	24
27	28	29	30	1
May				
Monday	Tuesday	Wednesday	Thursday	Friday
4 May Day Bank Holiday 	5	6	7	8
11  Activities in school	12	13	14	15
18 	19	20 Becontree's Got Talent Final 	21	22  Finish normal time – 3.15 p.m. Return 2 <sup>nd</sup> June at 8.45 a.m.